

AUSTEN QUARRY STAGE 2 PROJECT – INFORMATION NEWSLETTER

Hy-Tec Industries Pty Ltd (Hy-Tec) is seeking approval for an increase in the operational life of Austen Quarry to provide for continued supply of construction materials to Sydney and surrounding regions.

Background

In 1994, Aus10 Rhyolite Pty Ltd obtained development consent (DA 103/94) for a hard rock quarry (Austen Quarry) within a 2,800 ha property owned by the Hartley Pastoral Corporation. DA 103/94 allows for operations to continue until 2020.

The resource extracted, rhyolite, is an extrusive volcanic rock which is blasted, crushed and screened to supply high quality aggregates and road pavement products to regional and Sydney markets.

Hy-Tec, a subsidiary of S&P/ASX100 company, Adelaide Brighton Ltd, took over Austen Quarry operations in 2002. Hy-Tec operates nine concrete batching plants throughout the Sydney metropolitan area and regional New South Wales.

Stage 2 Proposal

Hy-Tec has completed an exploration program proving the rhyolite resource in the area referred to as Stage 2 (see Figure A). The Stage 2 extraction area occurs largely within a ridge to the southeast and east of the existing Stage 1 extraction area. The existing overburden emplacement area would also be extended to the south and west. Together, these activities would extend the area of the quarry by 26 ha.

The staged operations provide for the extraction, screening and despatch of up to 1.1 million tonnes of rhyolite products per year. Currently, Hy-Tec despatches approximately 750,000 tonnes of rhyolite products annually. The Stage 2 Project would retain the maximum annual despatch of 1.1 million tonnes per year.

The approved and ongoing transport route from Austen Quarry would include Jenolan Caves Road, between the quarry entrance and the Great Western Highway, with distribution via the Great Western Highway depending on customer locations.

Environmental scientists in fields including traffic, noise, air quality, water resources and ecology have been commissioned to assess the potential impacts of the Stage 2 Project within the quarry site and on surrounding properties. These assessments will form and accompany an *Environmental Impact Statement (EIS)* to be submitted with the development application.

It is noted that the frequency of truck movements between the quarry and its customers will change as sales more regularly approaches the maximum approved level. Impacts associated with changes to traffic from the Austen Quarry as well as potential impacts to the visual aspect of the surrounding area and local socio-economic conditions will also be examined in the EIS.

Approximately 50% to 75% of current production from Austen Quarry is supplied to Hy-Tec's concrete batching plants in the Sydney metropolitan area. These materials provide a vital link in the chain that produces infrastructure such as roads, public buildings and housing to the Lithgow, Blue Mountains and Sydney metropolitan areas.

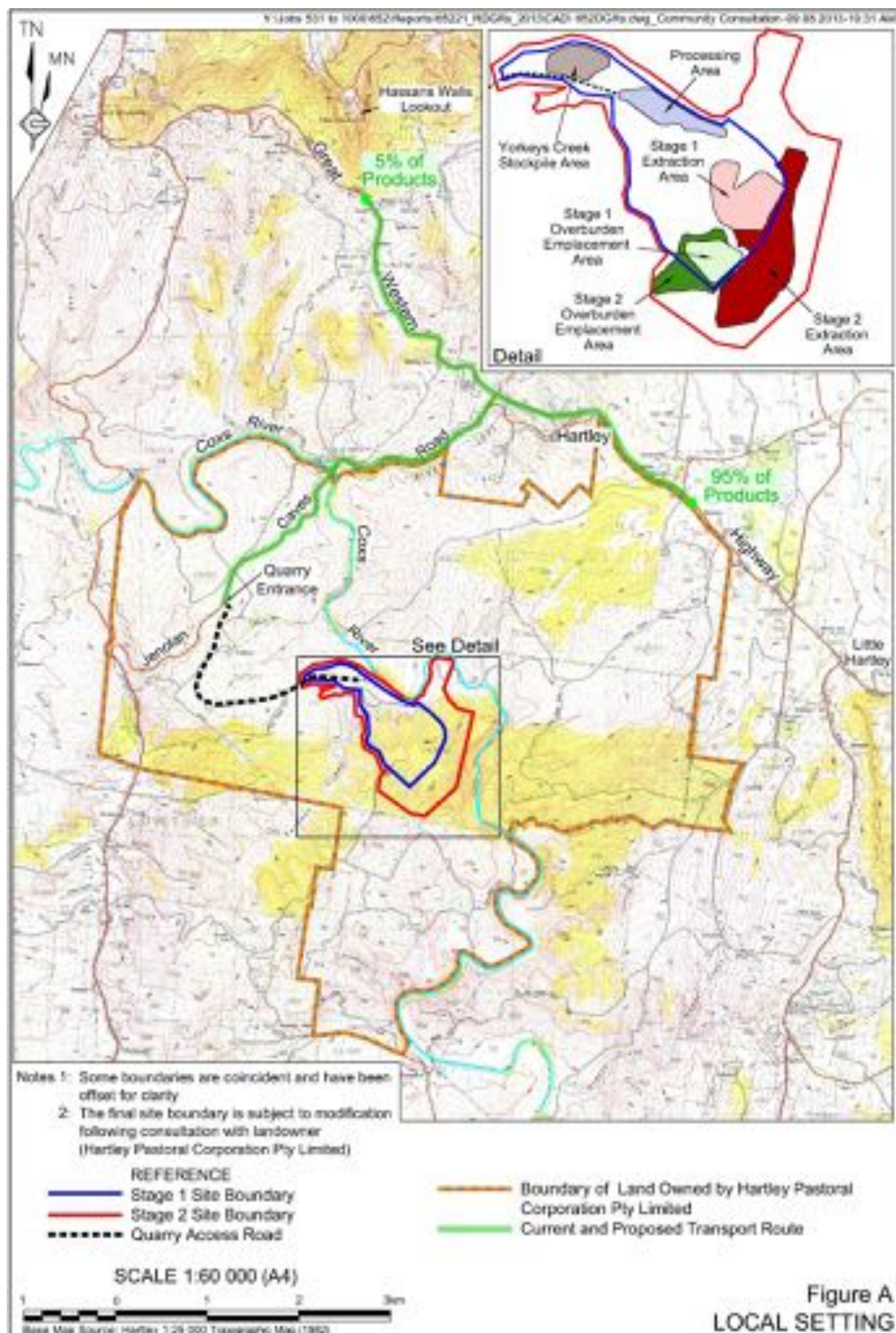
In addition to providing certainty of supply of high quality construction materials, the extended operational life of the quarry would also allow Hy-Tec to continue to generate the economic and social benefits associated with quarry operations. These benefits relate principally to the direct employment of 20 people and indirect employment of a further 40 people on a daily basis, together with Hy-Tec's local purchases, particularly in the greater Lithgow region.

Environmental Impact Statement (EIS) process

Hy-Tec proposes to submit the EIS to the New South Wales Department of Planning in late 2013. Once deemed adequate for exhibition, the EIS will be publically exhibited. During the public exhibition period (likely to be 4-6 weeks), submissions on the merit of the proposal may be lodged. These submissions will be considered in the assessment of the development application.



AUSTEN QUARRY STAGE 2 PROJECT – INFORMATION NEWSLETTER



AUSTEN QUARRY STAGE 2 PROJECT – INFORMATION NEWSLETTER

STAGE 2 – SUMMARY OF KEY FACTS AND STATISTICS

Applicant	Hy-Tec Industries Pty Ltd																				
Total area	Total area of the site is 144 ha																				
Area of operations (subject to modification throughout EIS preparation)	<ul style="list-style-type: none">• Quarry access road (3.1km x 12m) = 3.7 ha• Stage 1 extraction area (including the primary crushing station) = 12.1 ha• Stage 2 extraction area = 17.7 ha• Stage 1 overburden emplacement = 6.8 ha• Stage 2 overburden emplacement extension = 5.8 ha• Processing area (stockpile areas, processing plant, offices, amenities and workshops) = 6.1 ha• Yorkeys Creek stockpile area = 4.4 ha• Ancillary operational area ~2 ha• Total area of disturbance = 57.5 ha																				
Project Overview (subject to modification throughout EIS preparation)	<ul style="list-style-type: none">• Rhyolite (hard rock) resource• Project application sought for 30 years beyond 2020• Proven reserve of 39 million tonnes of recoverable rhyolite• Approximately 5 million tonnes of overburden• Production of hard rock aggregates, road construction materials, landscaping products and other specialty products• Extraction by drill and blast, load and haul methods• No changes to current processing operations proposed• Maximum despatch rate of 1.1 million tonnes per year (no increase)• Access via a sealed quarry access road off Jenolan Caves Road (no change proposed)• Average/maximum truck loads per day at maximum despatch through the Blue Mountains = 125/180• Estimated employment: 20 full time persons (an increase of 4 persons)• Hours of operation (minor proposed change) <table><tr><td></td><td>Monday to Friday</td><td>Saturday</td><td>Sunday and Public Holidays</td></tr><tr><td>Blasting</td><td>10:00am to 3:00pm</td><td>No activity</td><td>No activity</td></tr><tr><td>Extraction and processing</td><td>6:00am to 10:00pm</td><td>6:00am to 3:00pm</td><td>No activity</td></tr><tr><td>Loading trucks and product despatch</td><td>5:00am to 10:00pm</td><td>5:00am to 3:00pm</td><td>No activity</td></tr><tr><td>Maintenance</td><td colspan="3">24 hours/day – any day</td></tr></table>		Monday to Friday	Saturday	Sunday and Public Holidays	Blasting	10:00am to 3:00pm	No activity	No activity	Extraction and processing	6:00am to 10:00pm	6:00am to 3:00pm	No activity	Loading trucks and product despatch	5:00am to 10:00pm	5:00am to 3:00pm	No activity	Maintenance	24 hours/day – any day		
	Monday to Friday	Saturday	Sunday and Public Holidays																		
Blasting	10:00am to 3:00pm	No activity	No activity																		
Extraction and processing	6:00am to 10:00pm	6:00am to 3:00pm	No activity																		
Loading trucks and product despatch	5:00am to 10:00pm	5:00am to 3:00pm	No activity																		
Maintenance	24 hours/day – any day																				
Community Input	<ul style="list-style-type: none">• A Frequently Asked Questions document has been provided with this document to provide answers to common or expected questions.• A Community Feedback form is available with this document to allow participants to provide input and ask additional questions regarding the Proposal.• Information received from community members will be used for the design of the Stage 2 quarry operations. All issues will be addressed in the <i>Environmental Impact Statement</i> for the Project.																				
Further information	<p>Hy-Tec welcomes enquiries from our neighbours, surrounding community and Blue Mountains residents.</p> <p>Contact Darryl Thiedeke, on 0409 652 022 or by email darryl.thiedeke@hy-tec.com.au or Alex Irwin on 02 6362 5411 or by email alex@rwcorkery.com.</p>																				