

DA317/17 LGS:HP
Environment & Development Dept.

7 December 2017

Hartley District Progress Association
hartleyprogress@gmail.com

Dear Sir/Madam

**DA317/17 – PROPOSED TELECOMMUNICATIONS FACILITY - LOT 4 DP
1192566 - 2430 GREAT WESTERN HIGHWAY LITTLE HARTLEY NSW 2790**

Council has received the abovementioned development application from M Stankovic C/- Aurecon Australasia Pty Ltd relating to land located near your property. The development proposed is a Telecommunications Facility, at Lot 4 DP 1192566 - 2430 Great Western Highway LITTLE HARTLEY NSW 2790.

The application and plans are on display for a period of 14 days until 22 December 2017, to assist you in this matter, and are available for inspection at the Council's Environment & Development Department, in the Council Administration Centre, 180 Mort Street, Lithgow, free of charge, during office hours.

Under the Environmental Planning Assessment Act, a person who makes a *public submission* to Council in relation to a development application is required to disclose the reportable political donations and/or gifts (if any) made by the person making the submission, or any *associate of that person*, within the period commencing 2 years before the submission is made and ending when the application is determined. A notice about this matter and the Disclosure Form that is to be included with any submission are available on the NSW Department of Planning & Environment web site under 'Donation and gift disclosure'.

Thank you for your participation in this process. The responsible officer dealing with this application is Lauren Stevens who is available between 8:15am-11:00am on 63549999 Monday to Friday in Council's Environment & Development Department.

PRIVACY & PERSONAL INFORMATION PROTECTION NOTICE IN RELATION TO SUBMISSIONS & OBJECTIONS

By making a submission to this plan Council may make public details of your submission, which are *not* of a personal nature. Should you not wish details of your submission to be disclosed you should include a clear statement to this effect in your submission. Under these circumstances Council will consider your request and may not publically release a copy. Council will only consider the release of personal information in compliance with the Government Information (Public Access) Act 2009.

Yours sincerely

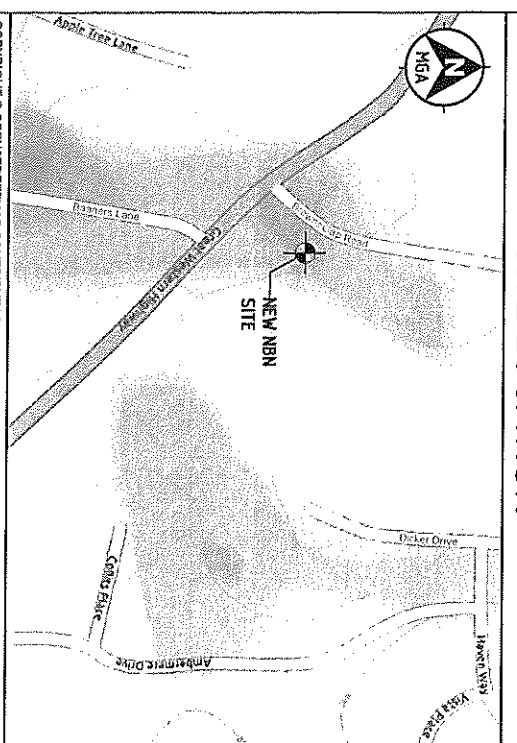


L G Stevens

DEVELOPMENT PLANNER



SITE LOCATION

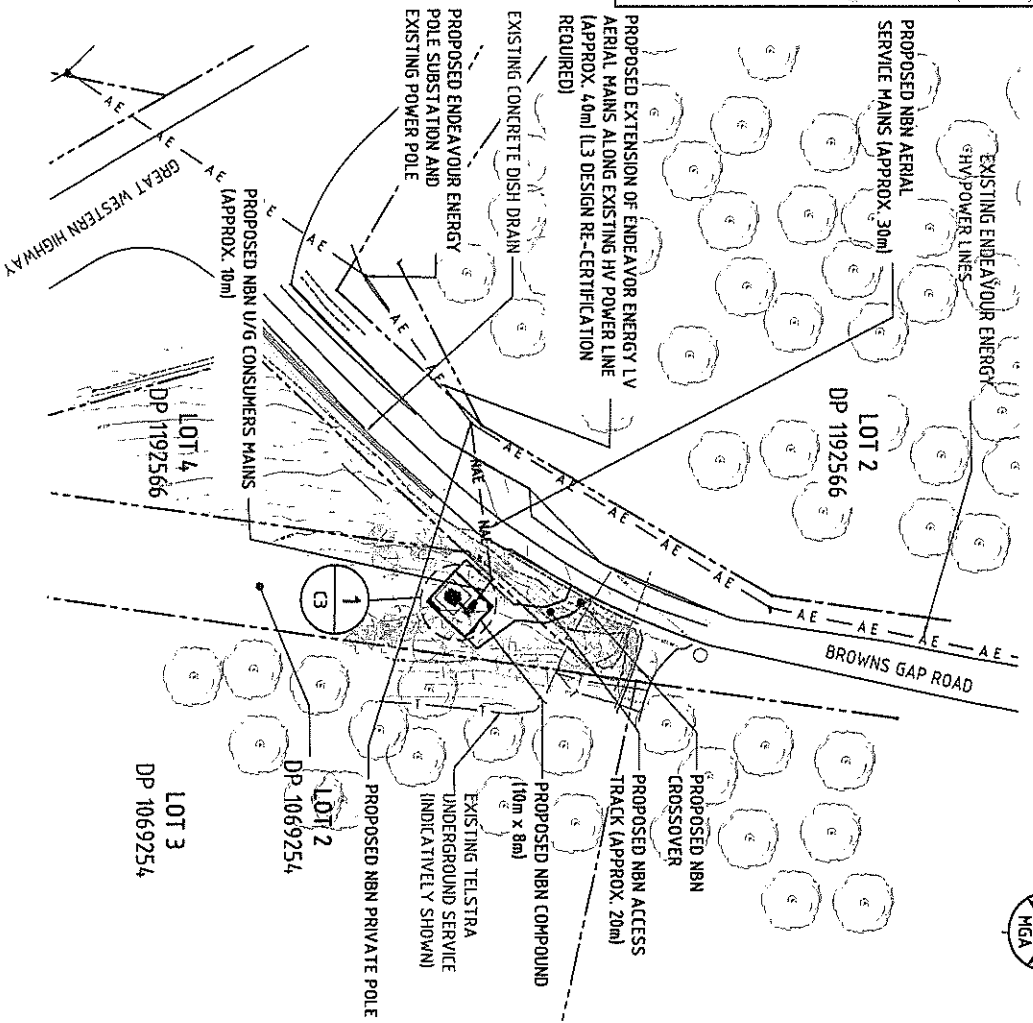


COPYRIGHT © OPENSTREETMAP CONTRIBUTORS, CC BY-SA
 This imagery is licensed under the OpenStreetMap license.
 Use of this image is subject to the terms and conditions of the Creative Commons Attribution-ShareAlike 3.0 license. The full license of which can be accessed at <http://www.openstreetmap.org/help/en/faq/faq-licence>

SITE CO-ORDINATES	
MONOPOLE LOCATION	
DATUM: MGA (GDA94)	ZONE: 56
LATITUDE	-33.56306°
LONGITUDE	150.20069°
EASTING	24,0134
NORTHING	6 282 778

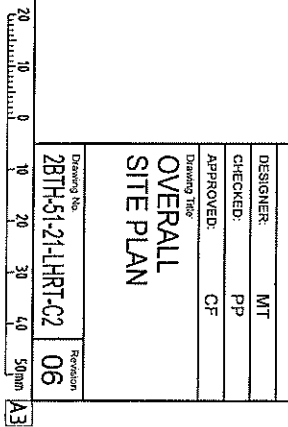
LEGEND

- A-E — A-E — EXISTING AERIAL ELECTRICAL ROUTE
- NAE — NAE — NEW AERIAL ELECTRICAL ROUTE
- — — — — PROPERTY BOUNDARY
- — — — — EXISTING UNDERGROUND TELSTRA SERVICES



OVERALL SITE PLAN

SCALE 1:1000



ERICSSON

Client

Client

Project

NATIONAL BROADBAND NETWORK
 SITE No: 2BTH-51-21-LHRT-02
 LITTLE HARTLEY
 LOT 2 DP 1069254
 CNR BROWNS GAP RD & GREAT WESTERN HWY
 LITTLE HARTLEY, NSW 2790

PRELIMINARY

46	21/01/17	REVISED TOPOGRAPHIC LOCATION
45	31/01/17	NEW SECTIONS AND PARTING ADDRESS
44	26/01/17	NEW CLIENTS CHANGED TO 0854309
43	21/01/17	REVISED TOPOGRAPHIC LOCATION
42	21/01/17	REVISED TOPOGRAPHIC LOCATION
41	21/01/17	REVISED TOPOGRAPHIC LOCATION
40	21/01/17	REVISED TOPOGRAPHIC LOCATION
39	21/01/17	REVISED TOPOGRAPHIC LOCATION
38	21/01/17	REVISED TOPOGRAPHIC LOCATION
37	21/01/17	REVISED TOPOGRAPHIC LOCATION
36	21/01/17	REVISED TOPOGRAPHIC LOCATION
35	21/01/17	REVISED TOPOGRAPHIC LOCATION
34	21/01/17	REVISED TOPOGRAPHIC LOCATION
33	21/01/17	REVISED TOPOGRAPHIC LOCATION
32	21/01/17	REVISED TOPOGRAPHIC LOCATION
31	21/01/17	REVISED TOPOGRAPHIC LOCATION
30	21/01/17	REVISED TOPOGRAPHIC LOCATION
29	21/01/17	REVISED TOPOGRAPHIC LOCATION
28	21/01/17	REVISED TOPOGRAPHIC LOCATION
27	21/01/17	REVISED TOPOGRAPHIC LOCATION
26	21/01/17	REVISED TOPOGRAPHIC LOCATION
25	21/01/17	REVISED TOPOGRAPHIC LOCATION
24	21/01/17	REVISED TOPOGRAPHIC LOCATION
23	21/01/17	REVISED TOPOGRAPHIC LOCATION
22	21/01/17	REVISED TOPOGRAPHIC LOCATION
21	21/01/17	REVISED TOPOGRAPHIC LOCATION
20	21/01/17	REVISED TOPOGRAPHIC LOCATION
19	21/01/17	REVISED TOPOGRAPHIC LOCATION
18	21/01/17	REVISED TOPOGRAPHIC LOCATION
17	21/01/17	REVISED TOPOGRAPHIC LOCATION
16	21/01/17	REVISED TOPOGRAPHIC LOCATION
15	21/01/17	REVISED TOPOGRAPHIC LOCATION
14	21/01/17	REVISED TOPOGRAPHIC LOCATION
13	21/01/17	REVISED TOPOGRAPHIC LOCATION
12	21/01/17	REVISED TOPOGRAPHIC LOCATION
11	21/01/17	REVISED TOPOGRAPHIC LOCATION
10	21/01/17	REVISED TOPOGRAPHIC LOCATION
9	21/01/17	REVISED TOPOGRAPHIC LOCATION
8	21/01/17	REVISED TOPOGRAPHIC LOCATION
7	21/01/17	REVISED TOPOGRAPHIC LOCATION
6	21/01/17	REVISED TOPOGRAPHIC LOCATION
5	21/01/17	REVISED TOPOGRAPHIC LOCATION
4	21/01/17	REVISED TOPOGRAPHIC LOCATION
3	21/01/17	REVISED TOPOGRAPHIC LOCATION
2	21/01/17	REVISED TOPOGRAPHIC LOCATION
1	21/01/17	REVISED TOPOGRAPHIC LOCATION



Aurecon Australia Pty Ltd ABN 54 005 133 873

DESIGNER: MIT

CHECKED: PP

APPROVED: CF

OVERALL SITE PLAN

Drawing No: 2BTH-51-21-LHRT-02 Revision: 06



Client



ERICSSON

Client

Client

Project:

NATIONAL BROADBAND NETWORK
 SITE No: 2BTH-51-21-LHRT
 LITTLE HARTLEY
 LOT 2 DP 1069254
 CNR BROWNS GAP RD & GREEN WESTERN HWY
 LITTLE HARTLEY, NSW 2790

PRELIMINARY

- 14. 23/01/17 REVISED CONFOUND LITERATION
- 15. 31/03/17 NEW SECTIONS AND PAINTING ADDED
- 16. 06/04/17 CABINET CHANGED TO HIRSESSO
- 17. 20/07/17 REVISED CONFOUND LITERATION
- 18. SITE'S PRELIMINARY ESSE
- 19. TITLE'S PRELIMINARY ESSE DRAFT
- Rev Desc: Revision Details

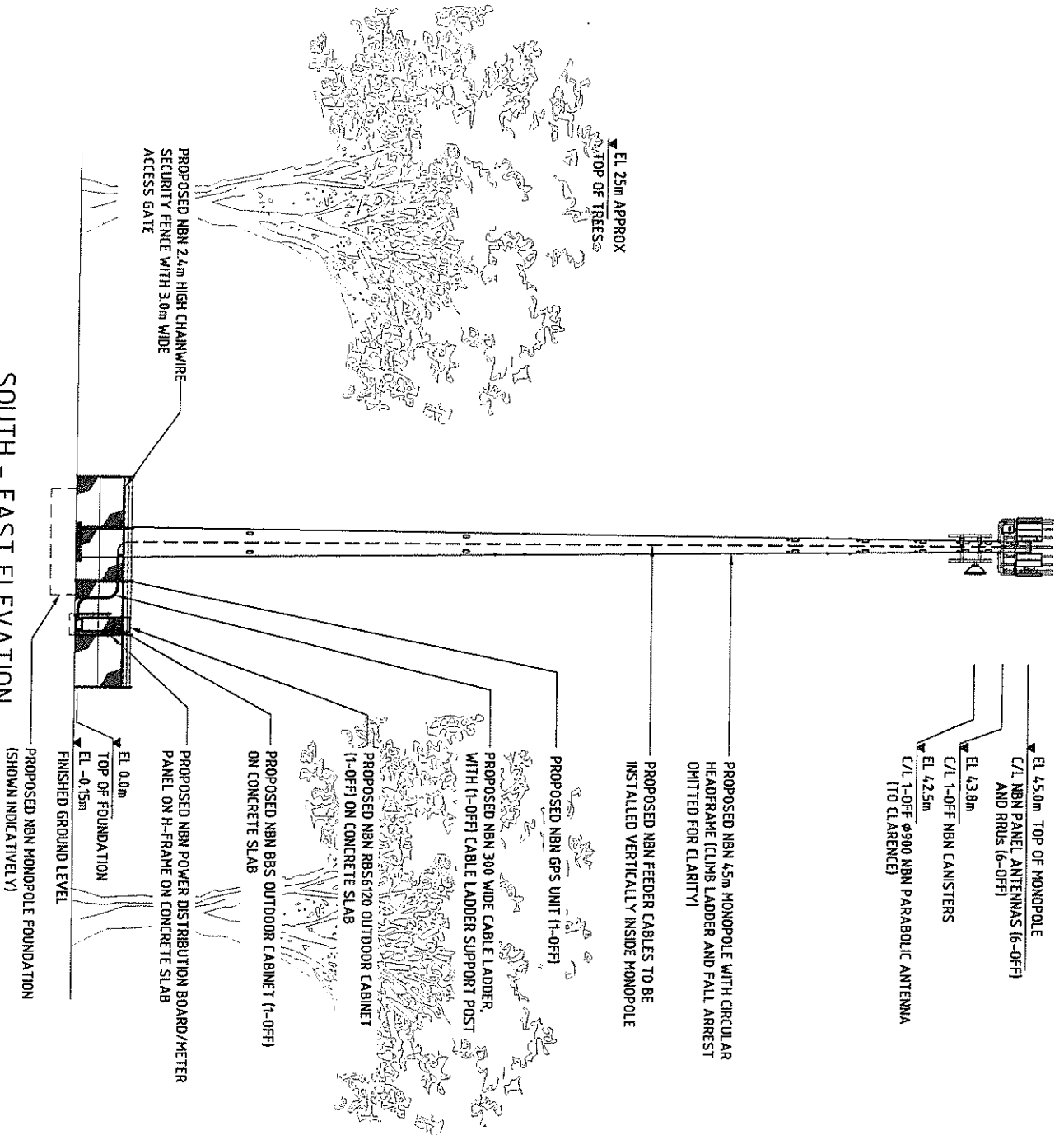
durecon
 Aurecon Australia Pty Ltd ABN 54 005 199 873

DESIGNER: MT
 CHECKED: PP
 APPROVED: CF

Drawing Title
 SITE ELEVATION AND DETAILS

Drawing No: 2BTH-51-21-LHRT-C4
 Revision: 06

20 10 0 10 20 30 40 50mm A3



SOUTH - EAST ELEVATION

SCALE 1:200